

Secure T

Low Spill Wall Mount Hearing Loop Amplifier



- Microphone & 25/70V speaker or a balanced line input
- 25' x 25' square area coverage
- Covers areas up to 20' x 40'
- Studio Quality Compressor Limiter
- Wall Mounted for permanent installation
- Mix controls on front
- 3A Peak Current
- >6A short Term Peak Current
- Phantom Power on the microphone input
- Two part Screw terminals for ease of installation.
- 0.1 ohm to 2 ohm Loop drive

contacta ■

Contacta, Inc.
332 East Lakewood Blvd.
Holland, Michigan 49424

Phone (616) 392-3400
Fax – (616) 392-3502
Sales@ contactainc.com

Description

The Secure T Audio Frequency Induction Loop Amplifier (Hearing Loop Amplifier) has been designed to provide loop coverage in schools, condominiums and meeting room environments where multiple loop amplifiers are in close proximity.

The unit contains two loop amplifiers running 90 degrees out of phase with each other. This feeds two special loop patterns on the floor or in the ceiling of the area to be covered, producing a low spill field with several unique properties. The field is contained both horizontally and vertically, and the field within the enclosed area is devoid of amplitude changes from horizontal to vertical. This ensures evenness of coverage in the whole room; something not possible with a conventional perimeter loop.

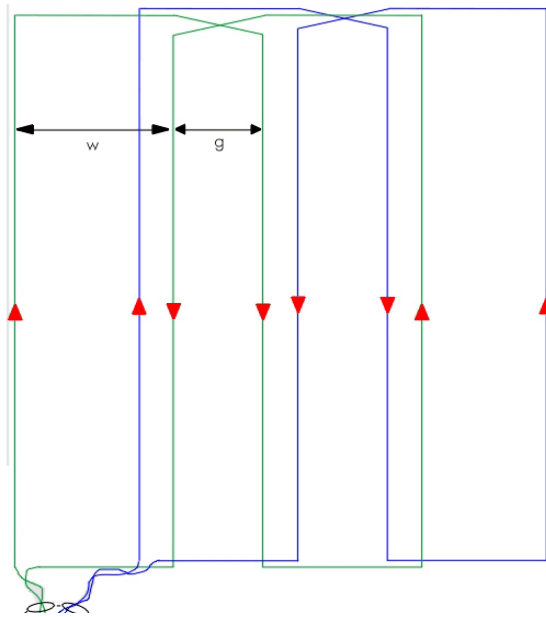
Low spill loops are also ideal for rooms with large metal contents, such as those with raised computer flooring. Since the field falls off vertically, rooms above and below each other can be looped without signal conflict.

The unit is self-contained in a wall mount enclosure with an attractive ABS lid and metal back box. It has standard knockouts on the top for signal cables and the bottom for AC power connection, allowing simple cable management and installation. The electrical supply can be hardwired to the units or the unit can be ordered with a 6ft power cord.

Front panel indication is given for input signal limit and peak loop drive current. All adjustments can be made through the secure ports on the front panel.

Secure T

Low Spill Wall Mount Hearing Loop Amplifier



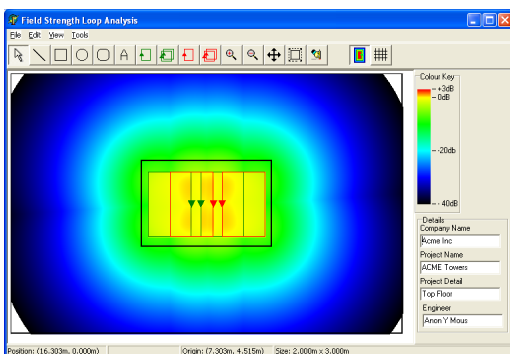
Coverage

The SecureT can drive up to four hearing loops, as shown on the above diagram.

Because the SecureT is a true constant current device, it can drive two main I loops and two secondary Q loops, or two I loops and one Q loop, or one I loop and one Q loop to fit the room constraints.

For normal layouts the width of the loops (w) should be between 4' and 8' wide (this sets the maximum spill width) the gap (g) between loops should be half the width (i.e. $g=w/2$).

The Q loops is laid over the gaps between the I loops, removing the null spots usually associated with figure 8 loop patterns. This 'shifted' field also restricts the spread of sound outside and above the loop.



Technical Specification

Inputs/connections

Audio Inputs	1 - mic and 1 – 25/70V speaker level or a balanced line
Type	2 part 5mm screw terminals
Loop working	12V 100mA signaling loop OK devices
Phantom	12V 2mA
Sensitivity	-50dBV Microphone, +40dBV 70V line and -10dBV balanced line

Power Input

Voltage	120 VAC 60Hz
Current	250 mA nominal
Power	90 VA Max
Internal fuse	1A HBC

Indications & Controls

LED indicators	Input signal limit, AC present and loop current - 1A & 3A for each loop
User controls	2 - input level/mix & 1 - current drive
Controls	Recessed – screwdriver adjust only

Audio Processing

Compressor	Variable ratio of 1:1 to limit of 20:1
Attack	10 mS
Release	Automatic from 500 to 1500mS
Dynamic Range	> 60dB
THD	< .25%

Output Stage

Type	Current mode
Loop impedance	0.1ohm to 2ohm max 3ohms at 1.6kHz
Loop type	Single turn 18 to 20 AWG
Peak Current	>5A peak 125mS burst / >3A peak
RMS Current	2A@1kHz
Protection modes	DC, Thermal, Short circuit, and soft start

Dimensions

Height	9"
Width	6.3"
Depth	3.0"
Weight	4.8 lbs

Contacta, Inc.

332 East Lakewood Blvd.
Holland, Michigan 49424
Telephone (616) 392-3400
Fax (616) 392-3502
Email: sales@contactainc.com